

Firmware Installation Guide

This is a firmware installation guide for the SEGA Saturn® Receiver that is paired to a Saturn Pro Controller. Included in this download is an updater program and the firmware file. In order to apply the update safely, a Windows 7/10/11 PC is required. The updater program may require firewalls/scanners to temporarily be paused before attempting installation. Ensure no other software that uses gamepads is running at the same time.

If you are unable to install the update or require further assistance, please email us at info@retro-bit.com.

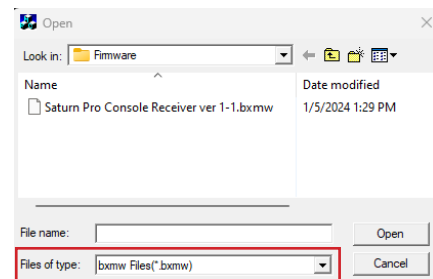
Saturn Pro Console Receiver Update - Ver 1.1

- ZL/ZR shoulder buttons will now correctly mirror L/R when in 3D Control Mode
- Shoulder button inputs that would “stick” in certain titles has been fixed
- “Ghost upwards drifting” directional inputs in certain games has been corrected
- “Virtual On Twin Stick” mapping can be accessed by pressing Start + X for 5 seconds. See page 2 for more details.

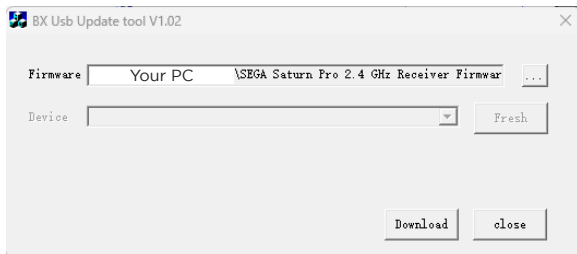
1) Open the program “BxUsbUpdate_V1.02” in the Updater folder.



2) Click on the [...] next to the Firmware box. On the bottom box, select the file type “.bmxw”. Then select the file “Saturn Pro Console Receiver ver 1-1” from the Firmware folder.



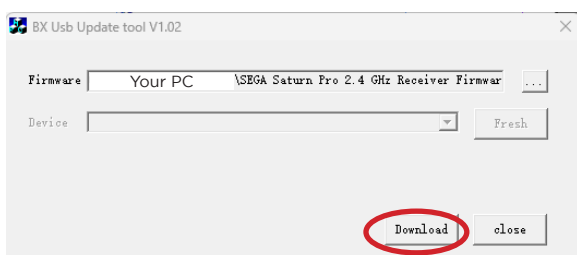
3) The program should look like this before the next step.



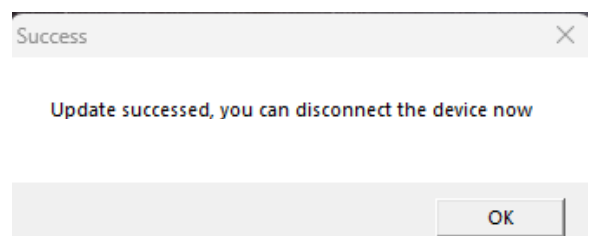
4) Using a USB to USB-C data cable, connect the correct end to the Saturn receiver. Then, while holding the pairing button on the receiver, connect the USB end to an available port on your PC and continue holding it until a secondary “device detected” sound plays and the LED on the receiver shuts off.



5) The updater program should automatically detect the device. Click on the “Download” button to install the firmware.



6) Allow the program to complete the installation. Once finished, the receiver should start blinking red again and there will be a pop up message. Then safely disconnect the receiver from your PC. It should be ready for use on your Saturn console.



Virtual On Mode

This new macro attempts to recreate the "Twin Stick" arcade setup that was available in Japan for the Virtual On series. Due to C and Z mirroring the LZ and RZ buttons, we had to make a few compromises. We appreciate everyone's feedback regarding this update. Please let us know how this works out. To enable this mode on the Saturn, press and hold Start + X for 5 seconds. See the mapping below:



Left Analog
DPad Inputs

Right Analog
Up = Y
Down = X
Left = A
Right = B



R & ZR = R

L & ZL = L